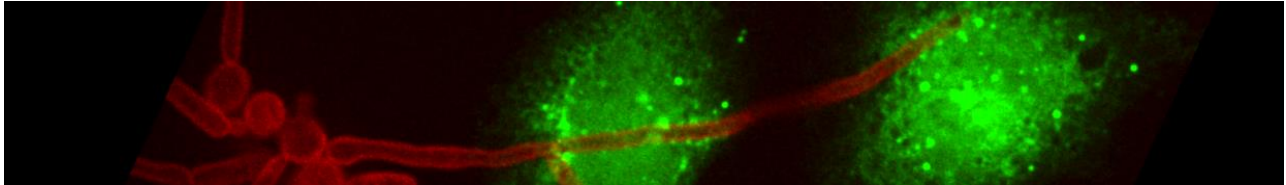


- Postdoc Position, Paris, France -

Studies of fungal invasion by correlative light microscopy and “volume” electron microscopy



We are seeking a postdoctoral researcher to investigate the structure, dynamics and molecular regulation of invasion by the fungal pathogen *Candida albicans* into human epithelial layers. The project entails the establishment of correlative light microscopy - electron microscopy (CLEM) pipeline that will be used to study the precise organization of highly transient stages of invasion. The postholder will be required to drive all facets of the project, including biological experiments, fluorescent microscopy, “volume” electron microscopy and image processing and analysis.

Candidates should hold a PhD and have **previous expertise in biological electron microscopy**, including sample preparation and acquisition. Experience with cell biology, molecular biology, fluorescent microscopy or live cell imaging is a plus. Previous experience working with fungi is not a requirement. Candidates must be highly motivated, able to work both independently and within a team and have excellent organizational skills.

The postholder will be part of the Weiner lab (www.weinerlab.org), based in the Cimi-Paris research institute hosted by the Faculty of Medicine of the Sorbonne University, an exciting and international research setting located in the heart of Paris. We study basic mechanisms of infection by fungal pathogens which present an increasingly growing threat to human health. We use an integrated approach combining multi-dimensional fluorescent microscopy, cell biology and correlative light and electron microscopy to study the earliest events of *Candida albicans* infection at the single cell level.

The position offered is a full-time, fixed-term post for 18 months (with possible extension), starting in late 2020. The selected candidate will also be encouraged to apply for national and international funding. A CV including a letter of interest and contact information of two referees should be sent to Dr. Allon Weiner (allon.weiner@sorbonne-universite.fr). Interviews will be done in person or by video conference. Do not hesitate to contact us for further information or questions regarding the position.