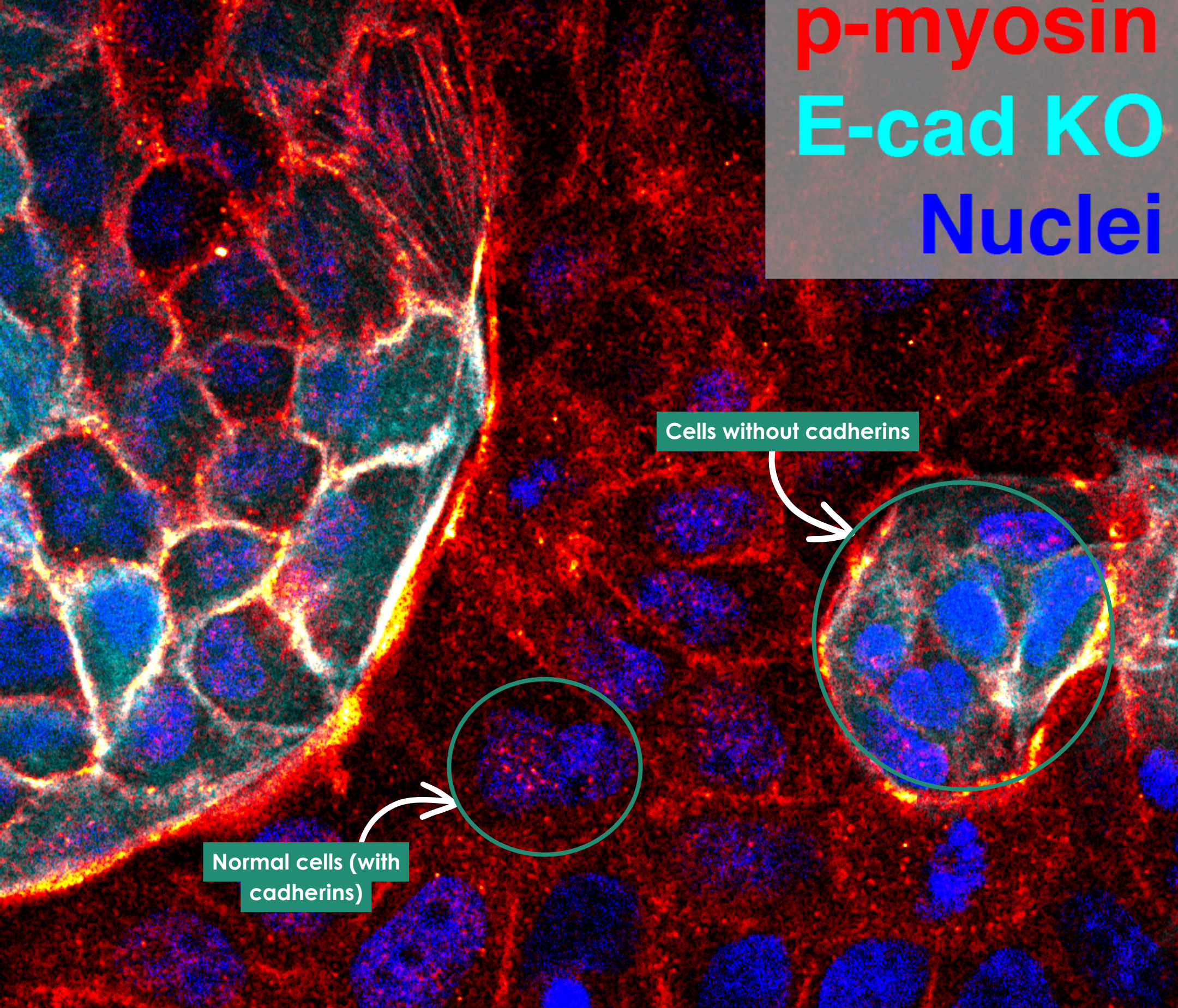


On this figure, after 24h, cells with cadherins (WT) expanded at the cost of cells without cadherins (E-cad KO).

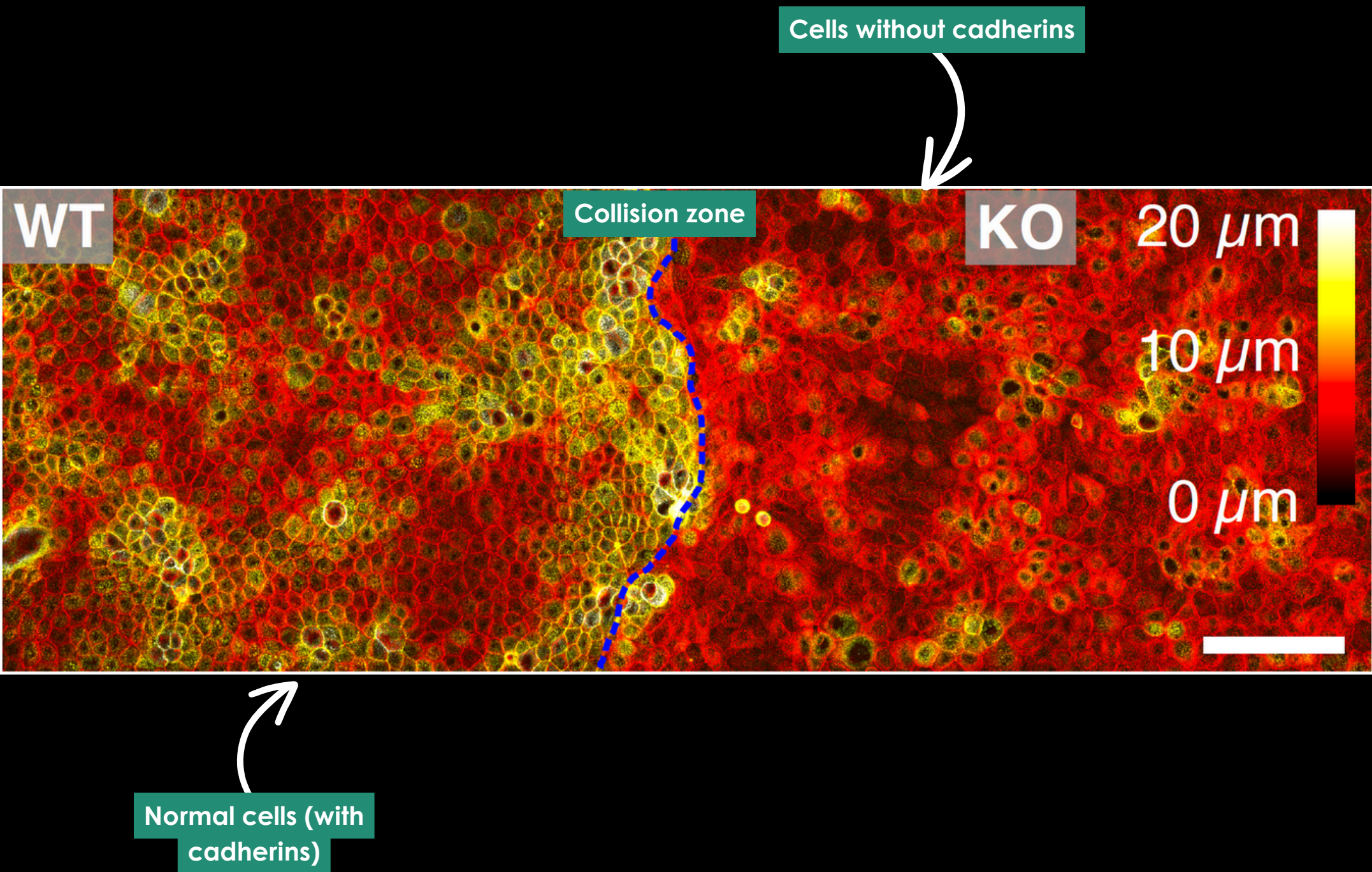


**p-myosin**  
**E-cad KO**  
**Nuclei**



This figure shows cells with cadherins (WT) with of pluricellular actomyosin cables in red and “islands” of cells without cadherins (E-cad KO) in cyan. One hypothesis is the pluricellular formation of actomyosin cables might help WT cells in efficiently removing small E-cad KO cells.





This figure shows colour-coded height projection of the actin signal in collision assay. This demonstrates that cells with cadherins (WT) can collectively change their shape, and thus better resist stress fluctuations counter to cell without cadherins (E-cad KO).